



Horizontal Cabling

Category 5e Horizontal Cable

Category 5e 4PR LSZH UTP Horizontal Cable

A crucial component of ADC KRONE's impedance matched TrueNet structured cabling solution. This cable guarantees Category 5e performance.

TrueNet LSZH horizontal cable is available in standard 305m boxes and 1000m reels and has a fire-rating of IEC 60332-1.



Features

- Performance exceeding Category 5e specifications up to 100MHz
- Ensures zero-bit errors, removing the need for Ethernet to re-transmit data packets and ensures data integrity
- Maximum throughput, reliability and performance in your IT network
- Third party certification at component level
- Covered by the TrueNet System Warranty

Ordering Information

Description	Catalogue Number
Cable Horizontal Category 5e LSZH, UTP 305m Reel, Orange	TN5ETZ1-ORM1
Cable Horizontal Category 5e LSZH, UTP 1000m Reel, Orange	TN5ETZ1-ORM6

Other cable types and colours are available upon request and subject to minimum order quantities.

Horizontal Cabling

Category 5e Horizontal Cable

Category 5e 4PR LSZH UTP Horizontal Cable

Electrical Data

DC resistance at 20°C (max)	9.38Ω / 100m
DC resistance unbalanced (max)	2%
Mutual capacitance at 20°C (max)	5.6nF / 100m
Operating voltage (max)	300 V DC
Worse case cable skew	22 ns / 100m
Nominal velocity of propagation	67%

Construction

Conductor	24 AWG solid bare copper
Insulation	100% polyolefin
Jacket	Low Smoke Zero Halogen
Nominal outside diameter	5.0mm

Environmental

Transport and storage	-20° to 75°C
Installation	4° to 50°C
Operation	-20° to 75°C

Compliances

Flammability	IEC 60332-1
Smoke density	IEC 61034
Acid gas	IEC 60754-1
pH	IEC 60754-2
Testing requirements	ISO/IEC 11801:2002 2nd edition (ref: IEC 61156 series) ANSI/TIA/EIA 568-B.2.1 EN 50173:2002 (ref: EN 50288 series)



Data Centre & Communications Room

Category 5e – Patch Cords

TrueNet® Solid Core Patch Cords

For use in data centres and communications rooms to enable 'hard-wired' connections between patch panels and active networking equipment.

Wired to T568-B and complete with terminated plugs at both ends, patch cords are 100% tested and warranted to exceed specification requirements.

Test Specification

Exceeds specifications according to ISO/IEC 11801:2002, EN 50173-1:2002 and TIA/EIA 568-B

Fire rating is IEC 60332-1



Features

- Performance exceeding Category 5e specifications up to 100MHz
- Wired to T568-B
- Complete with integrated strain relief to protect terminations within the plug
- Fully interoperable and backwards compatible
- Covered by the TrueNet System Warranty

Ordering Information

Description	Catalogue Number
Patch Cord, Solid Core, Category 5e UTP LSZH, 20m, Orange	6529 1 205-20
Patch Cord, Solid Core, Category 5e UTP LSZH, 30m, Orange	6529 1 205-30
Patch Cord, Solid Core, Category 5e UTP LSZH, 40m, Orange	6529 1 205-40
Patch Cord, Solid Core, Category 5e UTP LSZH, 50m, Orange	6529 1 205-50

RJ-K CL JACKS - UNSHIELDED

Compact high performance jack providing a solution for floor box and faceplate applications where only a maximum depth of 17mm is available. Shutters are fitted. Adaptors and faceplates to be purchased separately. Option of black or white shutter (blue for ISDN).



CL UTP, white shutter, 568A/B

Description	Pack Qty	KRONE Product No
CL UTP, white shutter, 568A/B	20	6540/1/200/01
CL UTP, black shutter, 568A/B	20	6540/1/201/01
CL UTP RJ11, white shutter	20	6540/1/204/00
CL UTP RJ11, black shutter	20	6540/1/205/00

RJ-K CL JACKS - SHIELDED

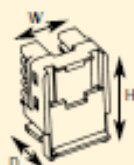
Compact high performance jack with an enclosing metal can to cover the whole of the rear of the jack. The angled cable shield connection is used in applications where the cable entry is from below the module/outlet and is at 45 degrees. Shutters are fitted. Adaptors and faceplates to be purchased separately.



CL FS angled, white shutter, 568A/B

Description	Pack Qty	KRONE Product No
CL FS Jack white shutter, 568A/B	20	6540/1/254/01
CL FS Jack angled, white shutter, 568A/B	20	6540/1/254/03

COMPACT RJ-K CL JACKS



Compact RJ-K CL UTP Jacks

Width – 21.5mm
Height – 30.4mm
Depth – 16.2mm



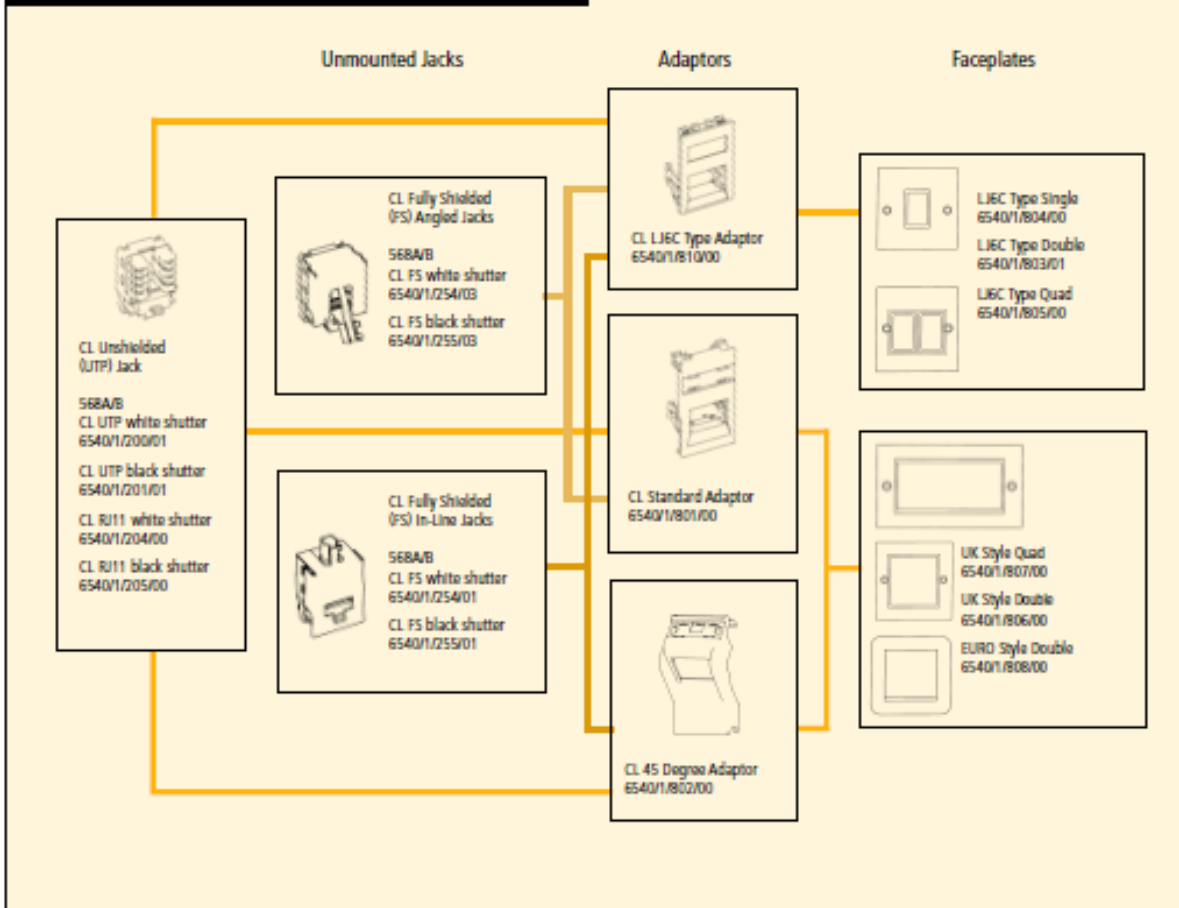
Compact RJ-K CL FS Jacks

In-line
Width – 24.1mm
Height – 38.7mm
Depth – 18mm



Angled
Width – 24.1mm
Height – 30.4mm
Depth – 31.3mm

COMPACT RJ-K CL COMPATIBILITY TABLE



RJ-K CL ADAPTORS

Range of adaptors to suit different faceplates. Purchase jacks and faceplates separately.



Description	Pack Qty	KRONE Product No
Standard (25x50) adaptor	20	6540/1/801/00
45° adaptor	20	6540/1/802/00
LJ6C adaptor with window	20	6540/1/810/00

COMPACT RJ-K CL ADAPTORS





Data Centre & Communications Room

Category 5e – Patch Panels

TrueNet® PCB Patch Panel UTP and S/FTP

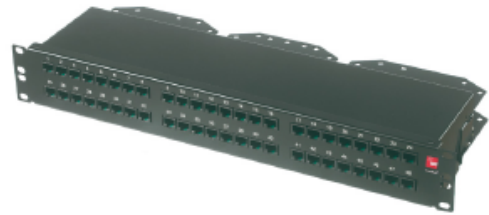
High density 19" PCB patch panels complete with rear cover, instruction sheet and fixing kit.

Dimensions

1U high, 19" wide, 175mm deep
1.5U high, 19" wide, 175mm deep

Test Specification

Exceeds specifications according to ISO/IEC 11801:2002, EN 50173-1:2002 and TIA/EIA 568-B



Features

- Performance exceeding Category 5e specifications up to 100MHz
- Swift terminations onto LSA-PLUS® IDC blocks
- Complete with IDC dust protection and fixing kit
- Fishtail design to vary cable management to suit installation requirement
- Available as 1U 16 port S/FTP; 1U 24 port UTP and STP; and 1.5U 48 port UTP and STP
- Covered by the TrueNet System Warranty

Ordering Information

Description	Catalogue Number
Patch Panel, Category 5e PCB 24 Port UTP	6527 1 607-24
Patch Panel, Category 5e PCB 48 Port UTP	6527 1 630-00
Patch Panel, Category 5e PCB 16 Port S/FTP	7022 1 015-16
Patch Panel, Category 5e PCB 24 Port S/FTP	7022 1 015-24
Patch Panel, Category 5e PCB 48 Port S/FTP	6527 1 632-00

10706 • 102588BE TrueNet® Structured Cabling

Data Centre & Communications Room
Category 5e

Data Centre & Communications Room

Accessories – Frames

Advanced Patching Frame (APF) II

The ADC KRONE APF has been designed for use in Data Centre and Structured Wiring Installations. ADC KRONE's TrueNet® range of jacks and patch panels are renowned for their advanced cable management features. With its high capacity for patch panels and unique patch cord management features the ADC KRONE APF provides a complete wiring solution for both the installer and the end-user.

The design of the ADC KRONE APF enables it to be used in both stand-alone and multiple installations. Frames connect together in such a way as to provide increased patch cord capacity in the vertical patching field between frames.

Dimensions

2232(h) x 985(w) x 501(d)mm

Features

- 42U Data Frame accommodating up to 42 1U panels and 1000+ patch cords
- Ideal for dedicated Communications Room environment
- Curved patching fields and unique Cable Management Arms prevent patch cords from being bent too tightly
- Frames fit together back-to-back, side-to-side or at right angles
- New dimension to Cable Management Arms makes back-to-back installations simpler and more cost-effective



Ordering Information

Description	Catalogue Number
Advanced Patching Frame 42U (inc. Cable Management Arms)	6420 1 500-00
APF Door Set – Glass	6420 1 510-00
Side Panels	6420 1 504-00
Side Panel Extension Kit	6420 1 505-00
APF Cable Management Arms	6420 1 103-01
APF Cable Management Arm Extensions	6420 1 516-00
Back-to-Back Kit	6420 1 506-00
Side-to-Side Kit	6420 1 507-00

